

■ Prairie



■ Farmhouse



■ Craftsman



■ Tudor

3,010

□ Sq. Ft

4

🛏 Bed

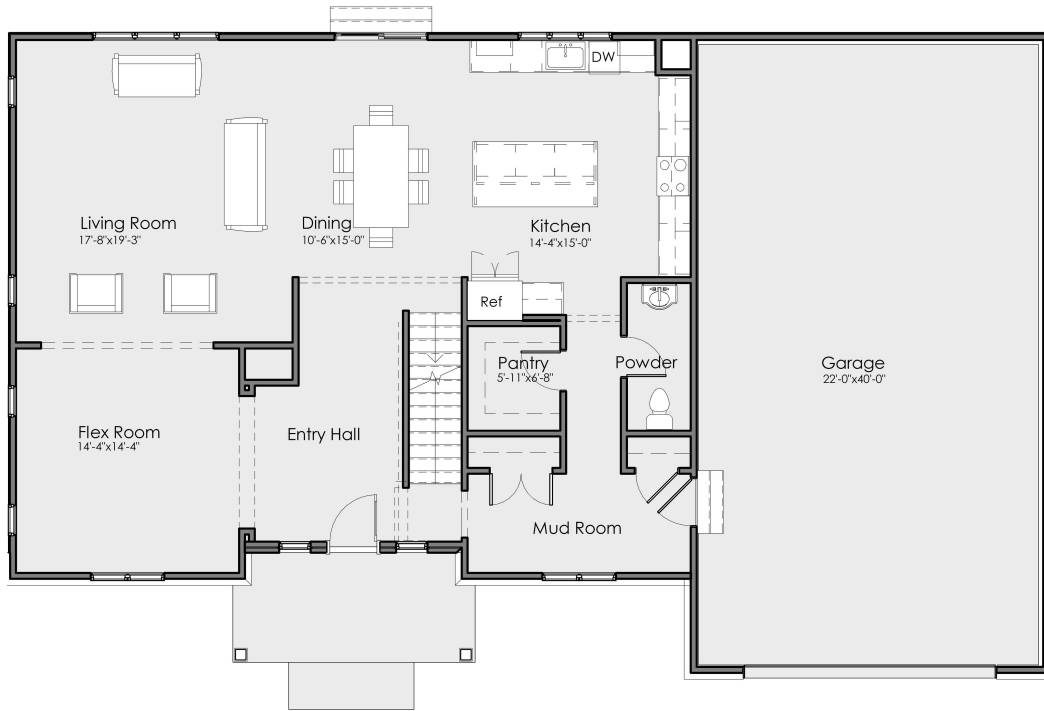
2.5

🛁 Bath

4

🚗 Car Garage

## Main Level



### AVAILABLE OPTIONS:

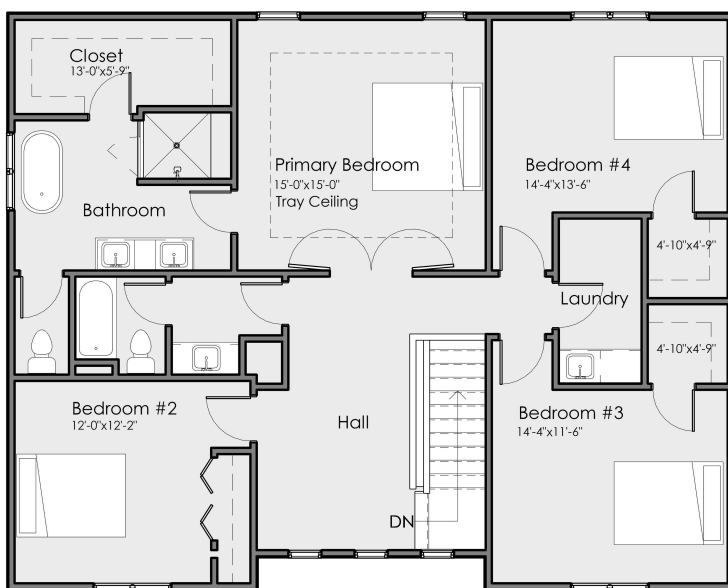
#### Structural Options:

- Side-load Garage
- Covered back porch

#### Interior Options:

- Garage Service Door
- Mudroom Bench
- Gourmet Kitchen appliance & cabinetry
- Laundry Appliances
- Fireplace
- Enclosed Flex Room

## Upper Level



|                        |                      |
|------------------------|----------------------|
| Living                 | 3,010 sq. ft.        |
| Main Level             | 1,498 sq. ft.        |
| Upper Level            | 1,498 sq. ft.        |
| Lower Level            | 14 sq. ft.           |
| Lower Level Unfinished | 1,384 sq. ft.        |
| Entry Porch            | 207 sq. ft.          |
| Garage                 | 924 sq. ft.          |
| <b>Total</b>           | <b>5,525 sq. ft.</b> |