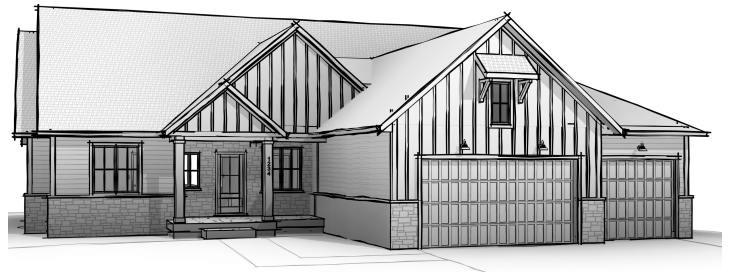


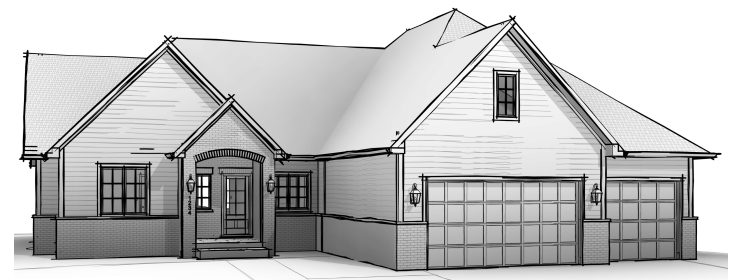
— Prairie



— Farmhouse



— Craftsman



— Tudor

2,760

□ Sq. Ft

4

🛏 Bed

2.5

🛁 Bath

3

🚗 Car Garage

— Main Level



AVAILABLE OPTIONS

Structural Options:

- Side-load Garage
- Covered back porch

Interior Options:

- Garage Service Door
- Mudroom Bench
- Gourmet Kitchen appliance & cabinetry
- Laundry Appliances
- Entertaining Cabinetry
- Fireplace

Living	2,760 sq. ft.
Main Level	2,746 sq. ft.
Lower Level	14 sq. ft.
Lower Level Unfinished	2,569 sq. ft.
Entry Porch	130 sq. ft.
Garage	756 sq. ft.
Total	6,215 sq ft