



■ Prairie



■ Farmhouse



■ Craftsman



■ Tudor

3,037

□ Sq. Ft

4 - 5

🛏 Bed

3.5

🛁 Bath

3

🚗 Car Garage

Main Level



AVAILABLE OPTIONS:

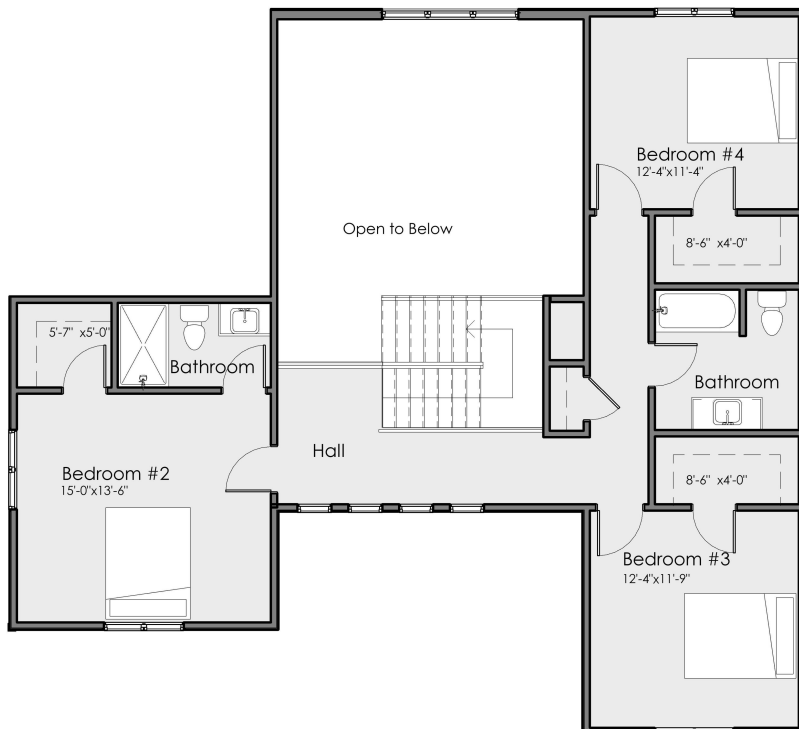
Structural Options:

- Side-load Garage
- Covered back porch

Interior Options:

- Garage Service Door
- Mudroom Bench
- Gourmet Kitchen appliance & cabinetry
- Laundry Appliances
- Flex Room Doors
- Fireplace
- 329 Sq. Ft. Loft in two-story space

Upper Level



Living	3,037 sq. ft.
Main Level	1,990 sq. ft.
Upper Level	1,029 sq. ft.
Lower Level	18 sq. ft.
Lower Level Unfinished	1,837 sq. ft.
Entry Porch	104 sq. ft.
Garage	688 sq. ft.
Total	5,666 sq. ft.