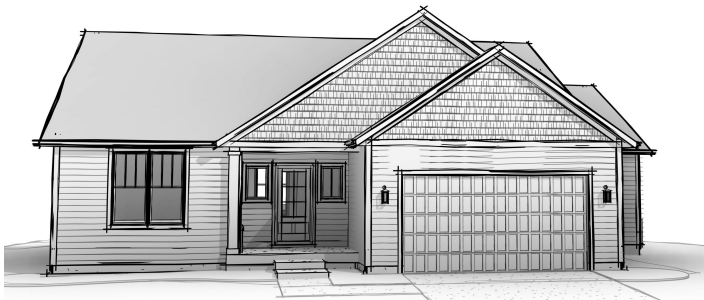


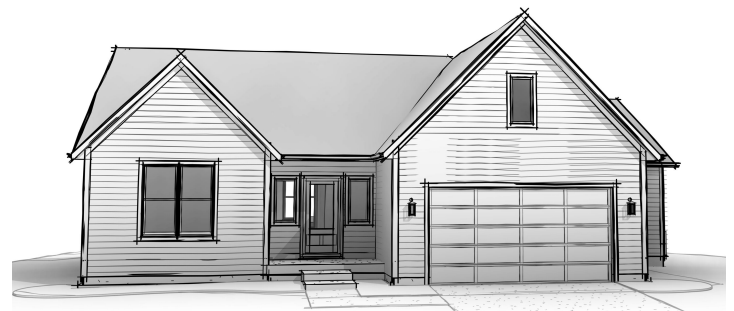
Modern Colonial



Farmhouse



Craftsman



Transitional

2,200

Sq. Ft

3

Bed

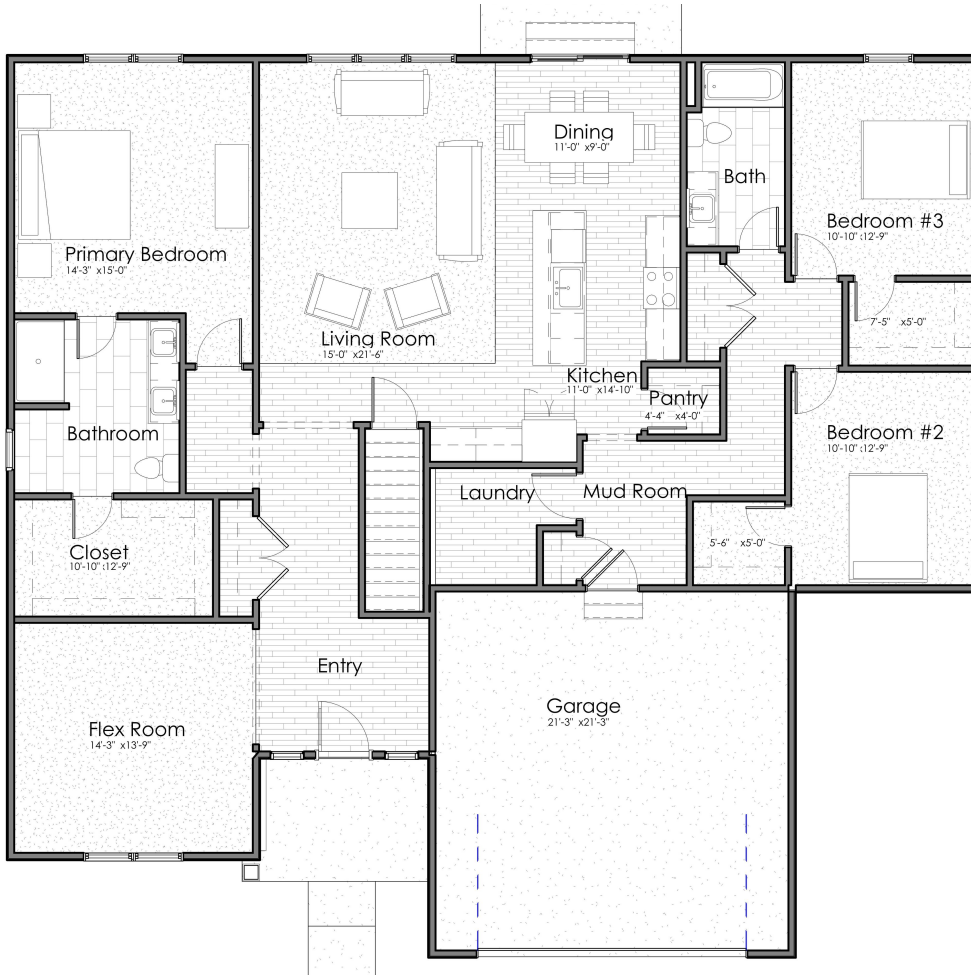
2

Bath

2

Car Garage

**Main Level**



**AVAILABLE OPTIONS:**

**Exterior Options:**

-Masonry

**Structural Options:**

- 15' x 13' Sun Room
- 15' x 13' Covered Porch
- 3rd car garage bay
- 6' storage bay
- 3' Garage extension

**Interior Options:**

- Electric fireplace
- Flex Room Doors
- Powder Room
- Mudroom bench
- Garage service door
- Laundry appliances
- Laundry cabinetry & sink
- Bathtub in Primary Suite
- Water closet in Primary Suite
- Double vanity in hall Bathroom

Living	2,200 sq. ft.
Main Level	2,200 sq. ft.
Lower Level Unfinished	2,069 sq. ft.
Entry Porch	65 sq. ft.
Garage	473 sq. ft.
<b>Total</b>	<b>4,807 sq. ft.</b>