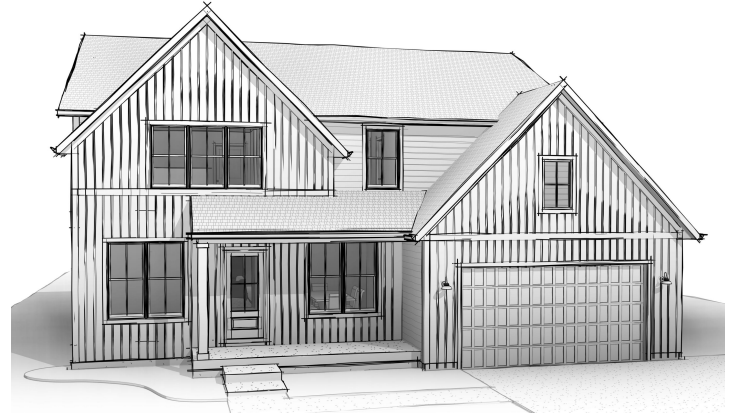




Modern Colonial



Farmhouse



Craftsman



Transitional

3,000

Sq. Ft

5

Bed

2.5

Bath

2

Car Garage

## Main Level



### AVAILABLE OPTIONS:

#### Exterior Options:

- Masonry

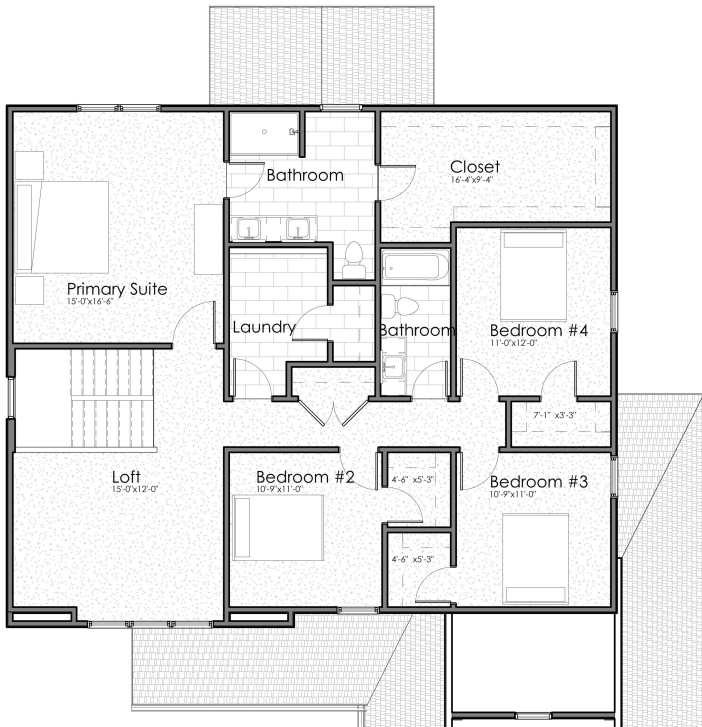
#### Structural Options:

- 13' x 10' Sun Room
- 13' x 10' Covered Porch
- 3rd car tandem garage bay
- 6' storage bay
- 3' Garage extension

#### Interior Options:

- Electric fireplace
- Fireplace Windows
- Flex Room Doors
- Mudroom bench
- Garage service door
- Laundry appliances
- Laundry cabinetry & sink
- Bathtub in Primary Suite
- Water closet in Primary Suite
- Double vanity in hall Bathroom
- Shower in first floor Bathroom
- Butler's Pantry & pass-through to Dining Room

## Upper Level



Living	3,000 sq. ft.
Main Level	1,433 sq. ft.
Upper Level	1,567 sq. ft.
Lower Level Unfinished	1,340 sq. ft.
Entry Porch	98 sq. ft.
Garage	469 sq. ft.
<b>Total</b>	<b>4,907 sq. ft.</b>