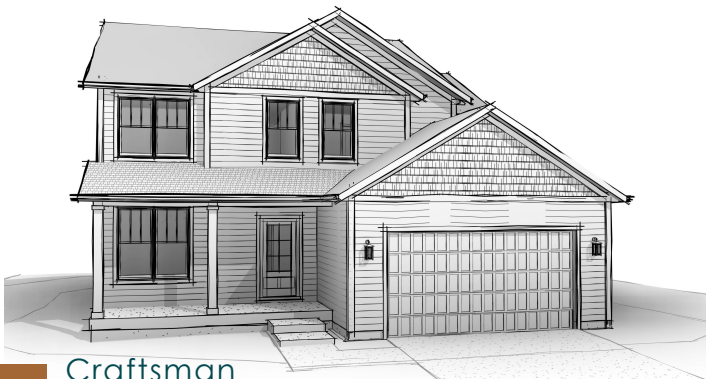




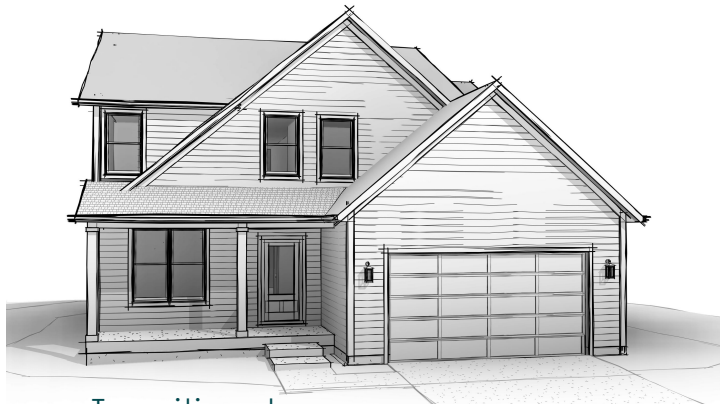
Modern Colonial



Farmhouse



Craftsman



Transitional

2,730

Sq. Ft

4

Bed

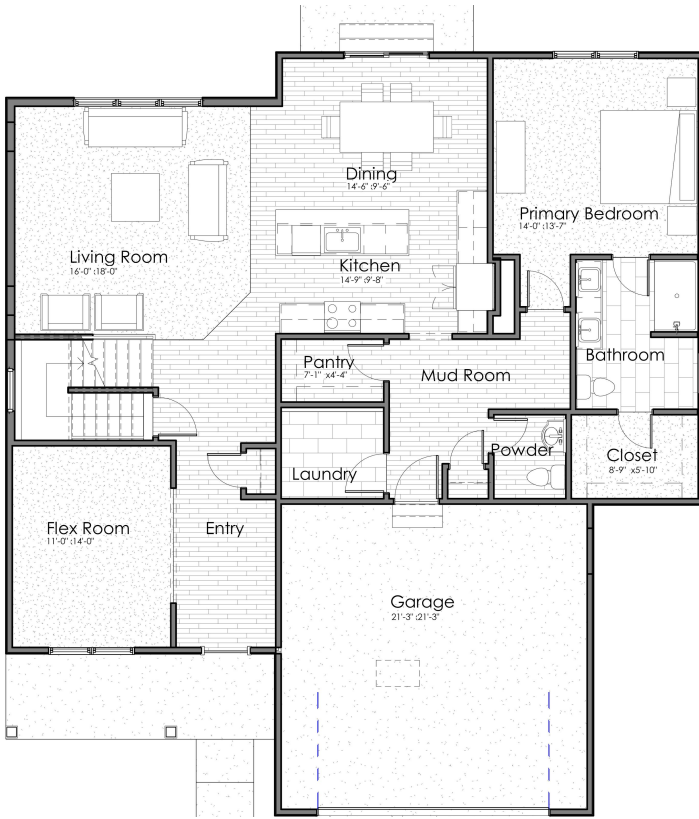
2.5

Bath

2

Car Garage

Main Level



AVAILABLE OPTIONS:

Exterior Options:

-Masonry

Structural Options:

- 14' x 10' Sun Room
- 14' x 10' Covered Porch
- 3rd car garage bay
- 6' storage bay
- 3' Garage extension

Interior Options:

- Electric fireplace
- Fireplace Windows
- Flex Room Doors
- Mudroom bench
- Garage service door
- Laundry appliances
- Laundry cabinetry & sink
- Bathtub in Primary Suite
- Water closet in Primary Suite
- Double vanity in hall Bathroom
- Bedroom #5 in Loft Space
- 372 Sq. Ft. Loft in two-story space

Upper Level



| | |
|------------------------|----------------------|
| Living | 2,730 sq. ft. |
| Main Level | 1,641 sq. ft. |
| Upper Level | 1,089 sq. ft. |
| Lower Level Unfinished | 1,540 sq. ft. |
| Entry Porch | 112 sq. ft. |
| Garage | 474 sq. ft. |
| Total | 4,856 sq. ft. |