



CRAFTSMAN
ELEVATION

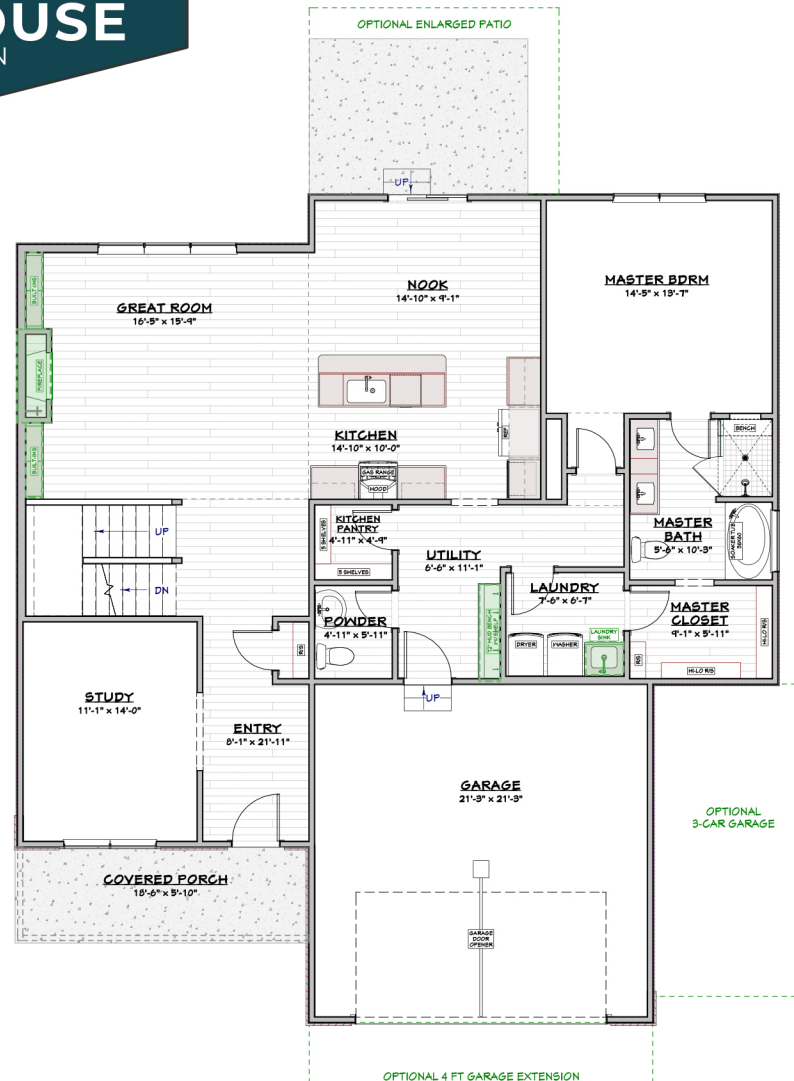
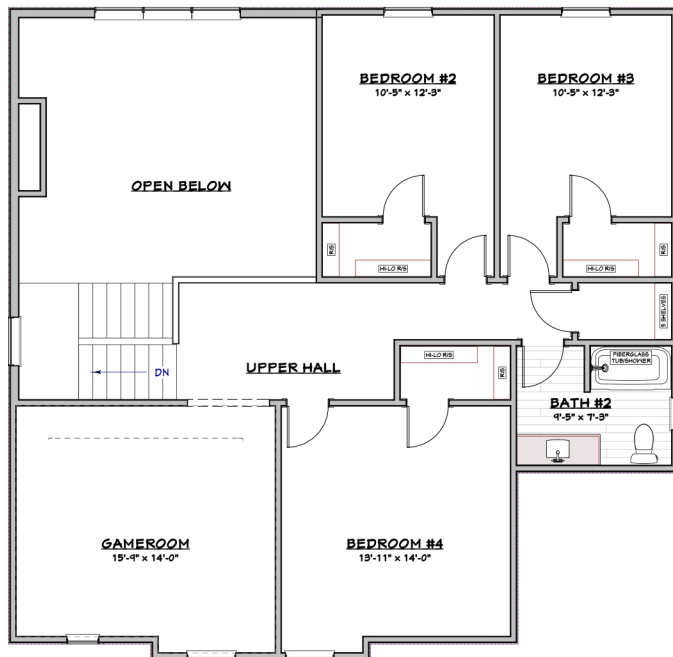


FARMHOUSE
ELEVATION



HAVYN
homes

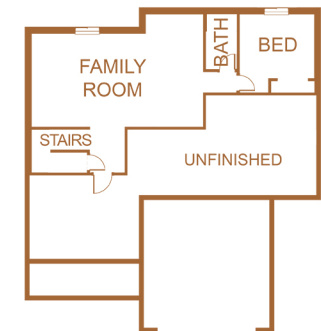
UPPER LEVEL



LOWER LEVEL

OPTIONAL FINISHED BASEMENT ADDS:

- A FAMILY ROOM
- 1 BEDROOM
- 1 BATH
- 865 FINISHED SQFT



MAIN FLOOR

PIKE

PIB - TWO STORY

havynhomes.com

4 Beds 2.5 Baths 2 Garage 2,764 sqft

219.306.4500

This floor plan brochure is for illustrative purposes only. Dimensions and layouts are approximate and may vary. Some items shown are not included, but may be available as options. Please verify all details and ask a representative for more information.

v25.0