



Modern Colonial



Farmhouse



Craftsman



Transitional

2,790

Sq. Ft

4

Bed

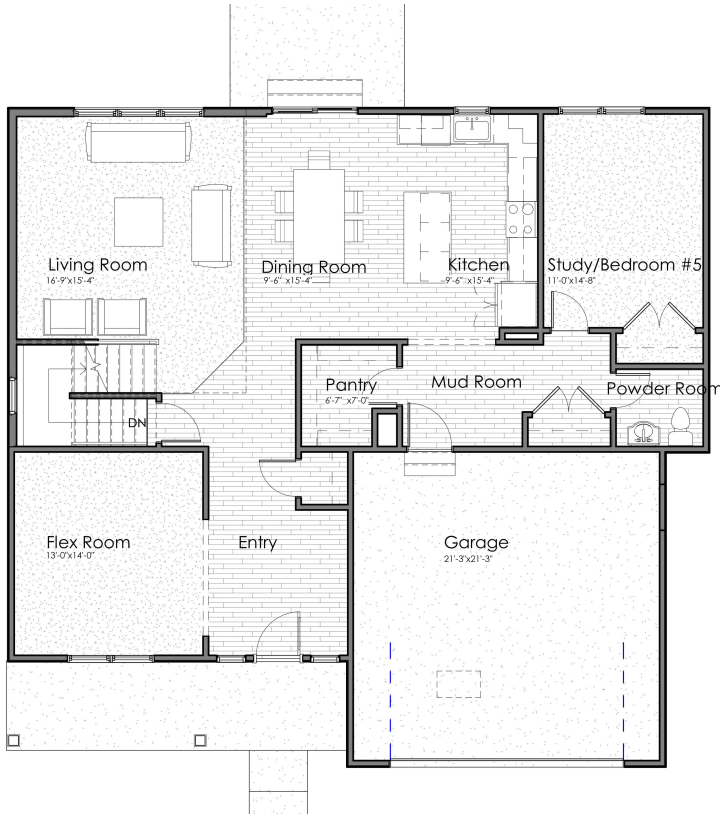
2.5

Bath

2

Car Garage

Main Level



AVAILABLE OPTIONS:

Exterior Options:

-Masonry

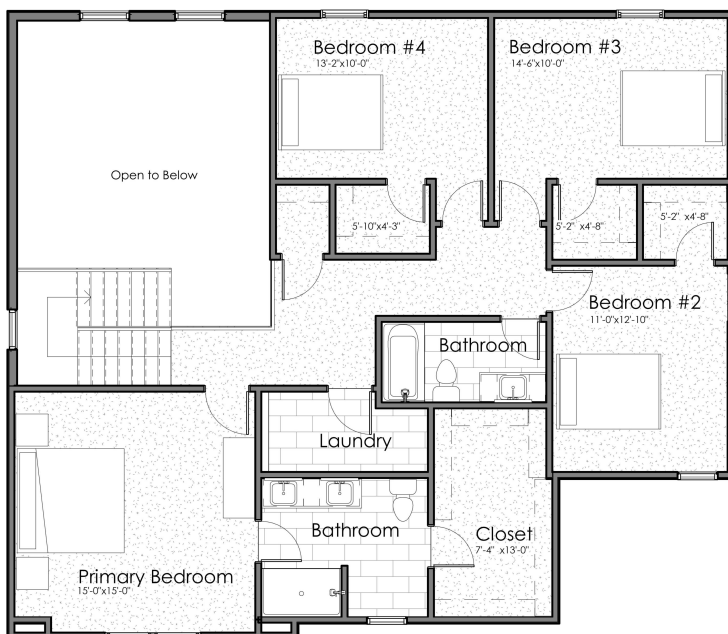
Structural Options:

- 13' x 10' Sun Room
- 13' x 10' Covered Porch
- 3rd car tandem garage bay
- 6' storage bay
- 3' Garage extension

Interior Options:

- Electric fireplace
- Fireplace Windows
- Flex Room Doors
- Mudroom bench
- Shower in first floor bathroom
- Garage service door
- Laundry appliances
- Laundry cabinetry & sink
- Bathtub in Primary Suite
- Water closet in Primary Suite
- Double vanity in hall Bathroom
- 323 Sq. Ft. Loft in two-story space

Upper Level



Living	2,790 sq. ft.
Main Level	1,478 sq. ft.
Upper Level	1,312 sq. ft.
Lower Level Unfinished	1,371 sq. ft.
Entry Porch	145 sq. ft.
Garage	473 sq. ft.
Total	4,779 sq. ft.