



CRAFTSMAN
ELEVATION



FARMHOUSE
ELEVATION

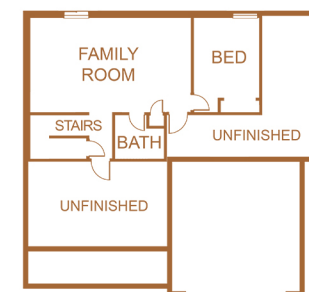


HAVYN
homes

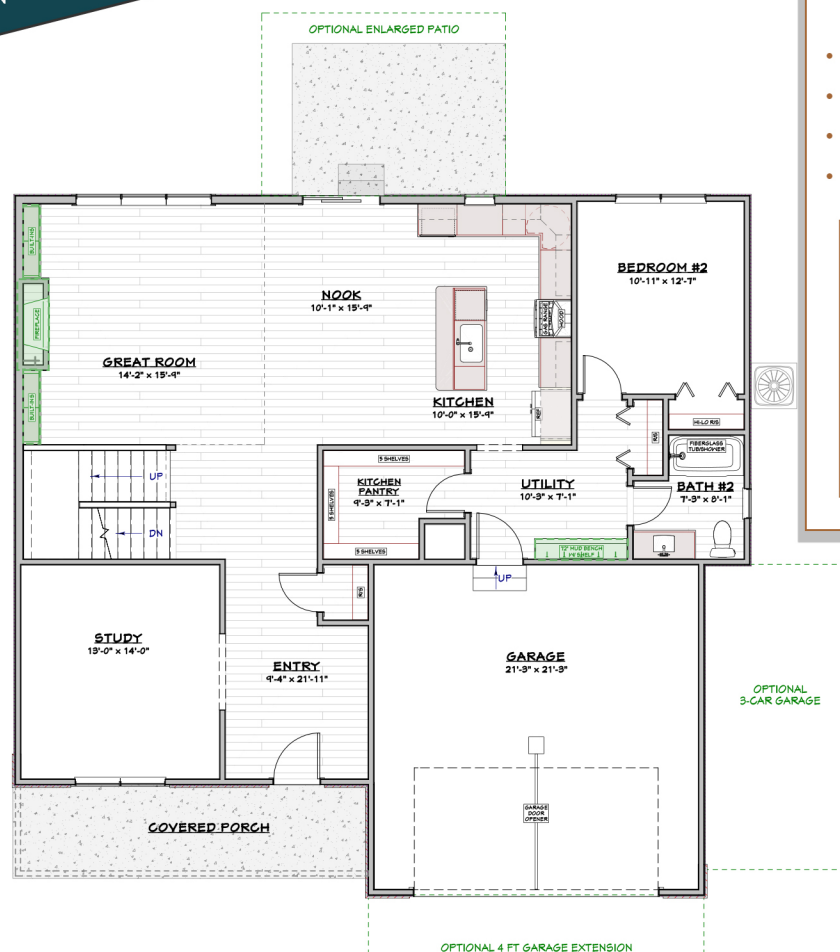
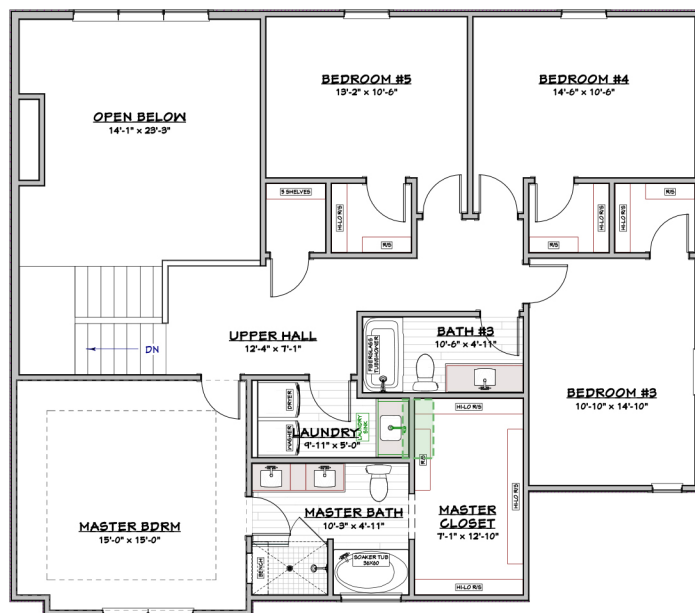
LOWER LEVEL

OPTIONAL FINISHED BASEMENT ADDS:

- A FAMILY ROOM
- 1 BEDROOM
- 1 BATH
- 770 FINISHED SQFT



UPPER LEVEL



MAIN FLOOR

OWEN

OWB - TWO STORY

havynhomes.com

5 Beds

3 Baths

2 Garage

2,837 sqft

219.306.4500

This floor plan brochure is for illustrative purposes only. Dimensions and layouts are approximate and may vary. Some items shown are not included, but may be available as options. Please verify all details and ask a representative for more information.

v25.4