



Modern Colonial



Farmhouse



Craftsman



Transitional

1,870

Sq. Ft

3

Bed

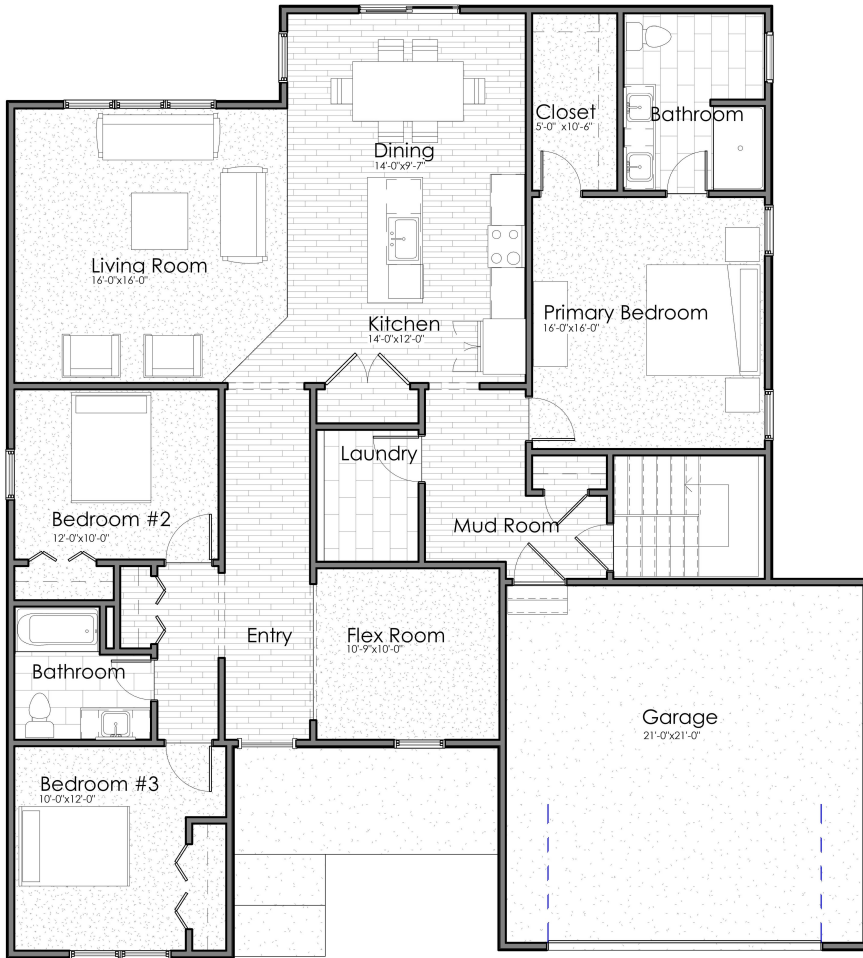
2

Bath

2

Car Garage

Main Level



AVAILABLE OPTIONS:

Exterior Options:

-Masonry

Structural Options:

- 13' x 10' Sun Room
- 13' x 10' Covered Porch
- 3rd car garage bay
- 6' storage bay
- 3' Garage extension

Interior Options:

- Electric fireplace
- Flex Room Doors
- Mudroom bench
- Garage service door
- Laundry appliances
- Laundry cabinetry & sink
- Bathtub in Primary Suite
- Water closet in Primary Suite
- Double vanity in hall Bathroom

Living	1,870 sq. ft.
Main Level	1,870 sq. ft.
Lower Level Unfinished	1,748 sq. ft.
Entry Porch	99 sq. ft.
Garage	469 sq. ft.
Total	4,186 sq. ft.