



Modern Colonial



Farmhouse



Craftsman



Transitional

2,487

Sq. Ft

4

Bed

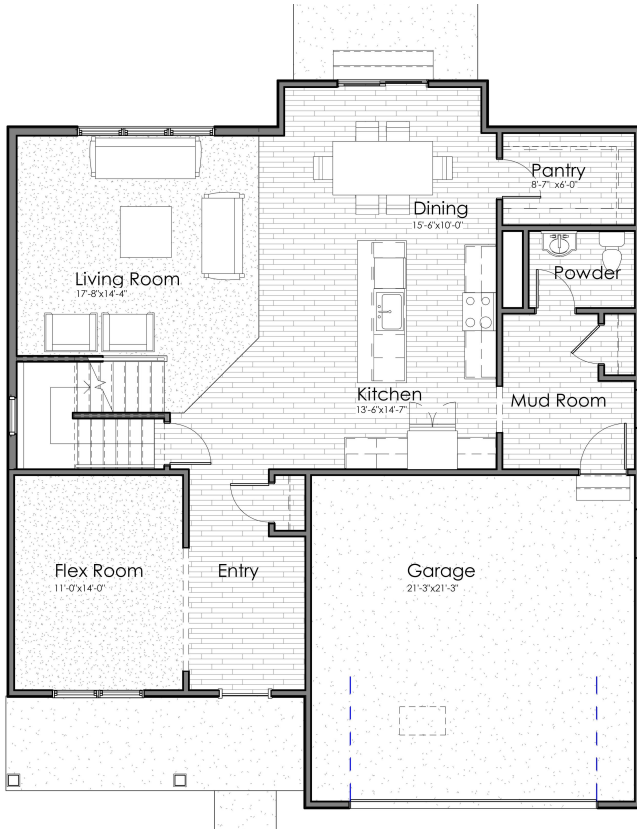
2.5

Bath

2

Car Garage

## Main Level



### AVAILABLE OPTIONS:

Exterior Options:

- Masonry

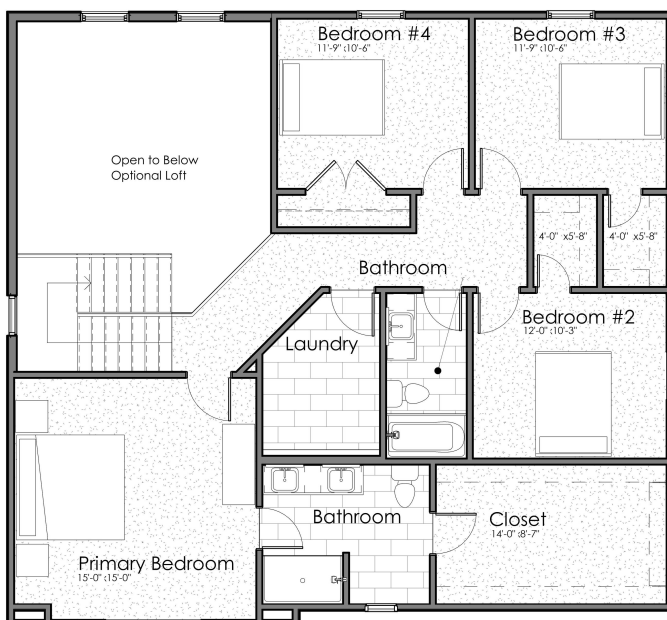
Structural Options:

- 13' x 10' Sun Room
- 13' x 10' Covered Porch
- 3rd car garage bay
- 6' storage bay
- 3' Garage extension

Interior Options:

- Electric fireplace
- Fireplace Windows
- Flex Room Doors
- Mudroom bench
- Mudroom Window
- Garage service door
- Laundry appliances
- Laundry cabinetry & sink
- Bathtub in Primary Suite
- Water closet in Primary Suite
- Double vanity in hall Bathroom
- 294 Sq. Ft. Loft in two-story space

## Upper Level



Living	2,487 sq. ft.
Main Level	1,255 sq. ft.
Upper Level	1,232 sq. ft.
Lower Level Unfinished	1,155 sq. ft.
Entry Porch	120 sq. ft.
Garage	469 sq. ft.
<b>Total</b>	<b>4,231 sq. ft.</b>