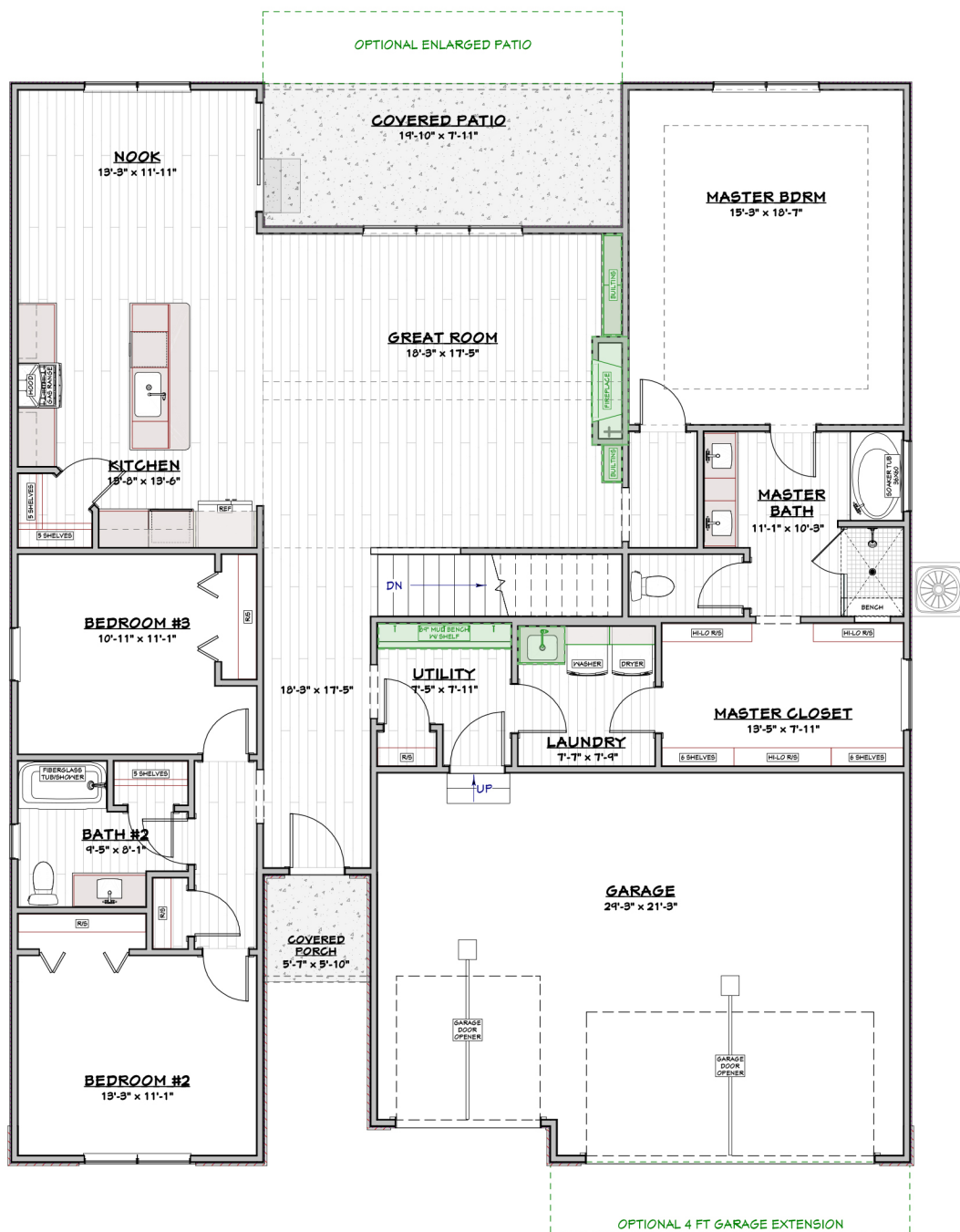




**CRAFTSMAN**  
ELEVATION



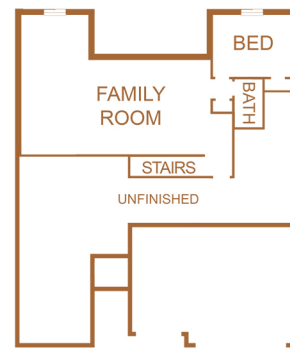
**FARMHOUSE**  
ELEVATION



## LOWER LEVEL

### OPTIONAL FINISHED BASEMENT ADDS:

- A FAMILY ROOM
- 1 BED
- 1 BATH
- 1,058 FINISHED SQFT



**3 Beds**

**2 Baths**

**3 Garage**

**2,096 sqft**

# MARTIN

MAB - SINGLE STORY



havynhomes.com



219.306.4500