



Modern Colonial



Farmhouse



Craftsman



Transitional

2,268

Sq. Ft

4

Bed

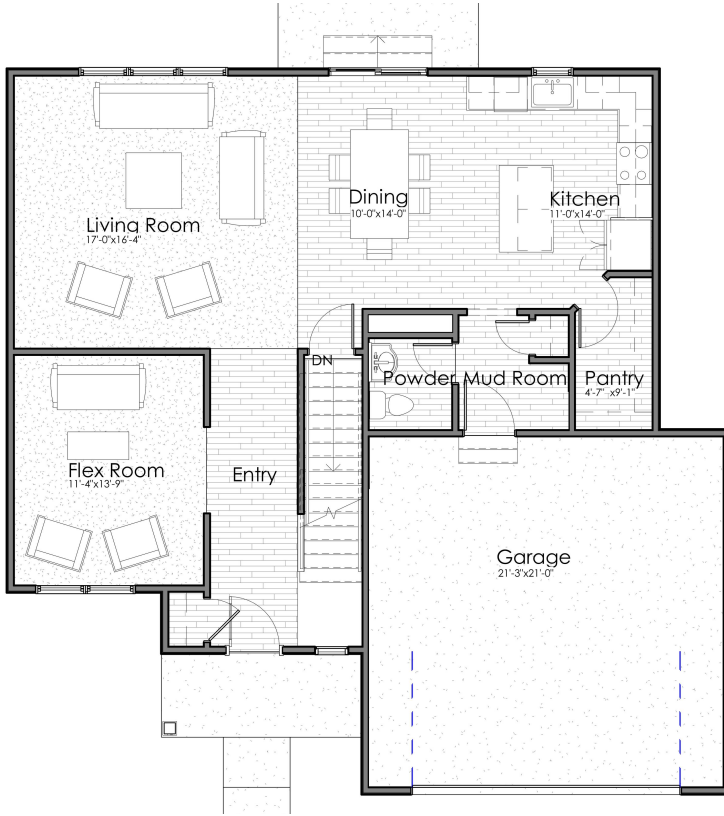
2.5

Bath

2

Car Garage

## Main Level



### AVAILABLE OPTIONS:

#### Exterior Options:

-Masonry

#### Structural Options:

- 13' x 10' Sun Room
- 13' x 10' Covered Porch
- 3rd car garage bay
- 6' storage bay
- 3' Garage extension

#### Interior Options:

- Electric fireplace
- Fireplace Windows
- Flex Room Doors
- Mudroom bench
- Garage service door
- Laundry appliances
- Laundry cabinetry & sink
- Bathtub in Primary Suite
- Water closet in Primary Suite
- Double vanity in hall Bathroom

## Upper Level



Living	2,268 sq. ft.
Main Level	1,100 sq. ft.
Upper Level	1,168 sq. ft.
Lower Level Unfinished	1,015 sq. ft.
Entry Porch	61 sq. ft.
Garage	469 sq. ft.
<b>Total</b>	<b>3,813 sq. ft.</b>