



Modern Colonial



Farmhouse



Craftsman



Transitional

2,065

Sq. Ft

4

Bed

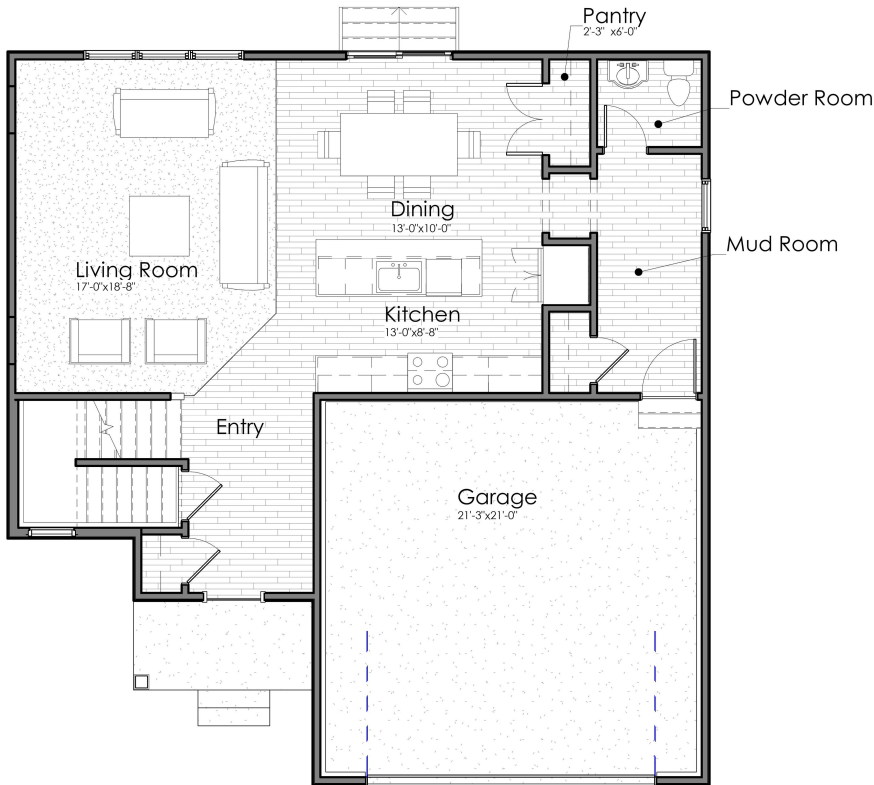
2.5

Bath

2

Car Garage

## Main Level



### AVAILABLE OPTIONS:

#### Exterior Options:

- Masonry

#### Structural Options:

- 13' x 10' Sun Room
- 13' x 10' Covered Porch
- 3rd car garage bay
- 6' storage bay
- 3' Garage extension

#### Interior Options:

- Electric fireplace
- Mudroom bench
- Garage service door
- Laundry appliances
- Laundry cabinetry & sink
- Bathtub in Primary Suite
- Water closet in Primary Suite
- Double vanity in hall Bathroom

## Upper Level



Living	2,065 sq. ft.
Main Level	929 sq. ft.
Upper Level	1,136 sq. ft.
Lower Level Unfinished	838 sq. ft.
Entry Porch	50 sq. ft.
Garage	469 sq. ft.
<b>Total</b>	<b>3,422 sq. ft.</b>