



**CRAFTSMAN**  
ELEVATION



**FARMHOUSE**  
ELEVATION

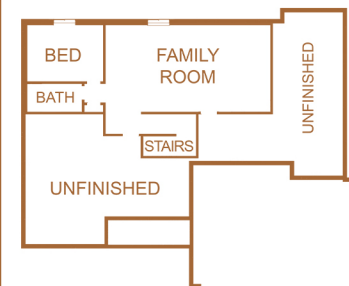


**HAVYN**  
homes

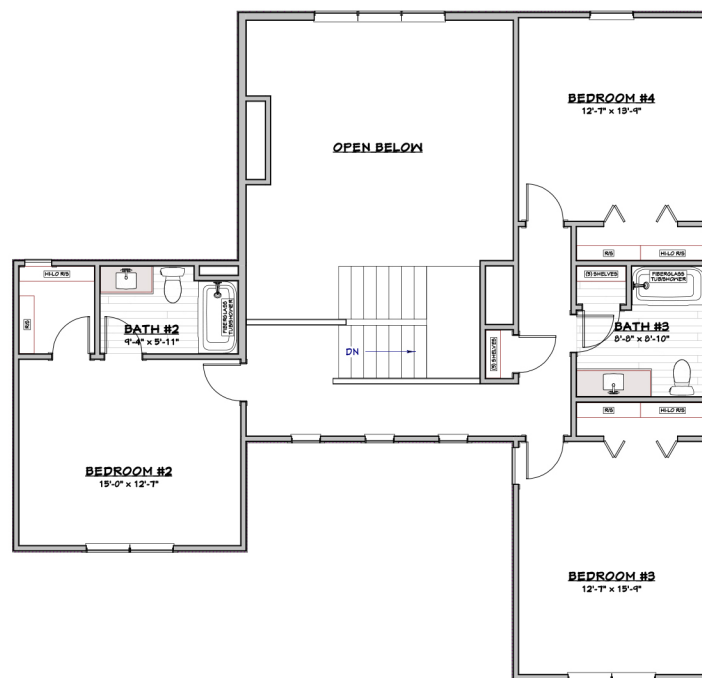
## LOWER LEVEL

### OPTIONAL FINISHED BASEMENT ADDS:

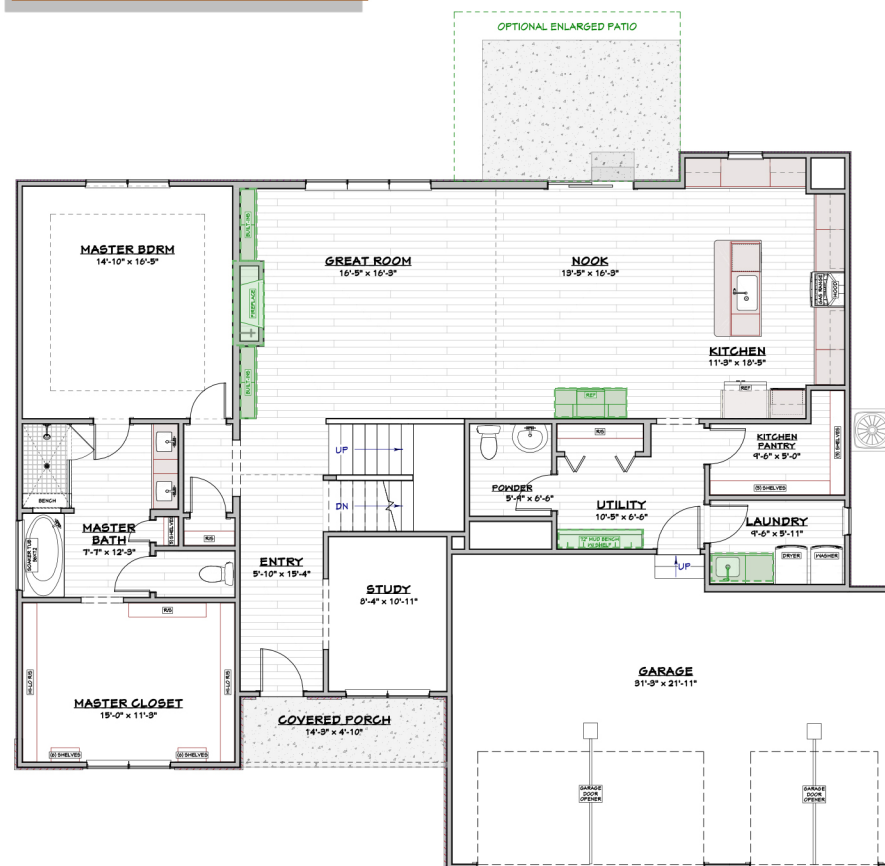
- A FAMILY ROOM
- 1 BEDROOM
- 1 BATH
- 850 FINISHED SQFT



UPPER LEVEL



MAIN FLOOR



**CLIFTY**

CLB - TWO STORY

havynhomes.com

4 Beds 3.5 Baths 3 Garage 3,031 sqft

219.306.4500

This floor plan brochure is for illustrative purposes only. Dimensions and layouts are approximate and may vary. Some items shown are not included, but may be available as options. Please verify all details and ask a representative for more information.

v25.0