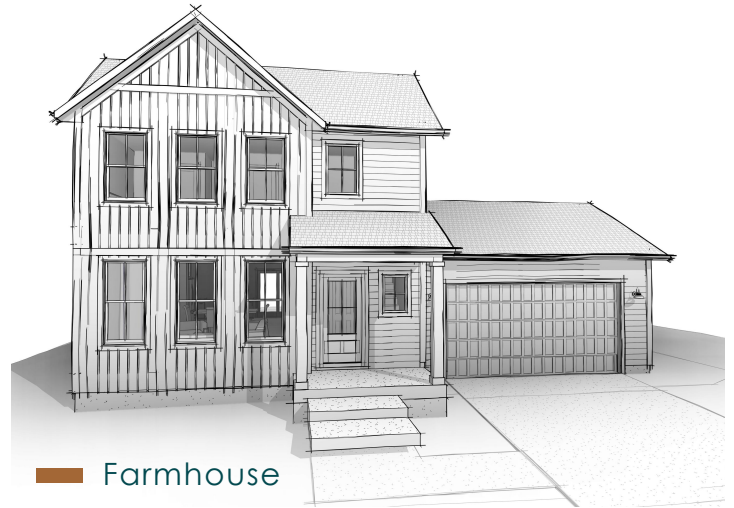
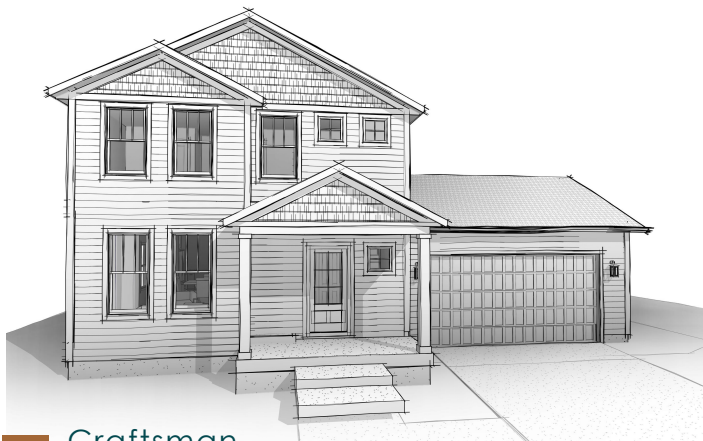


Modern Colonial



Farmhouse



Craftsman



Transitional

1,818

Sq. Ft

3

Bed

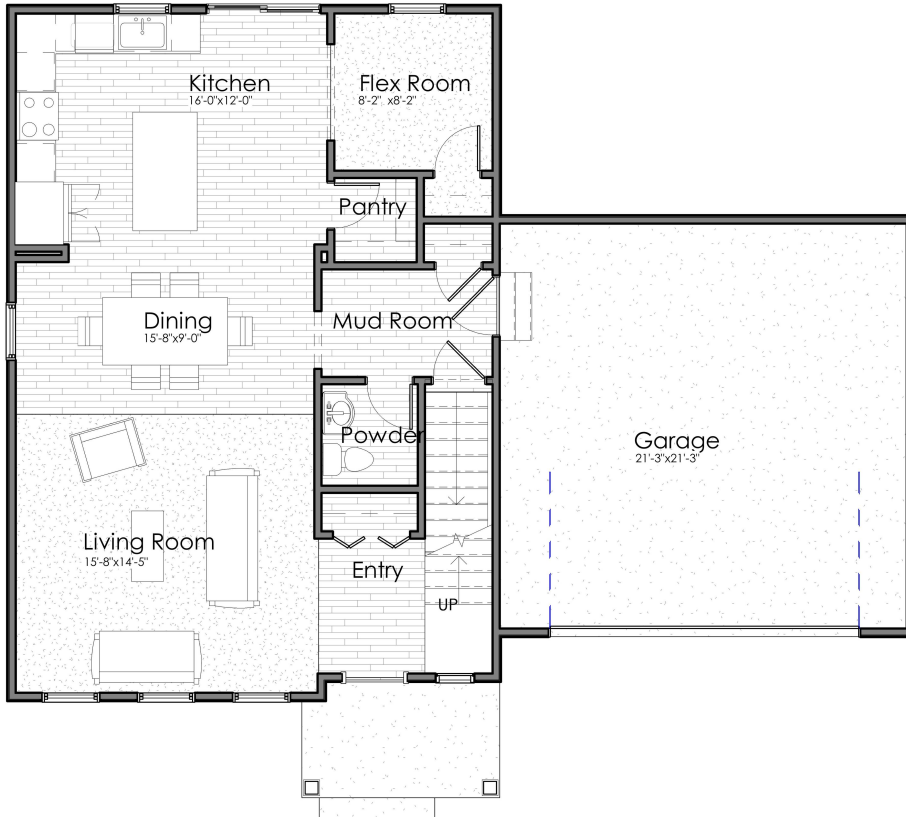
2.5

Bath

2

Car Garage

Main Level



AVAILABLE OPTIONS:

Exterior Options:

- Masonry

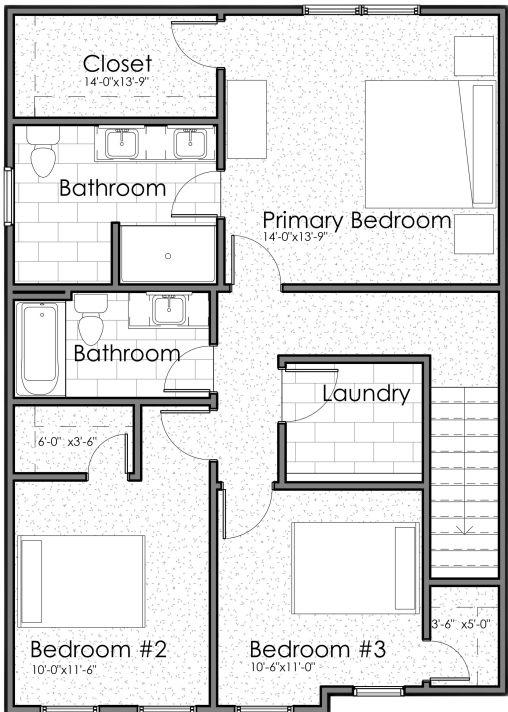
Structural Options:

- 13' x 10' Sun Room
- 13' x 10' Covered Porch
- 3rd car tandem garage bay
- 6' storage bay
- 3' Garage extension

Interior Options:

- Electric fireplace
- Flex Room Doors
- Mudroom bench
- Garage service door
- Laundry appliances
- Laundry cabinetry & sink
- Bathtub in Primary Suite
- Water closet in Primary Suite
- Double vanity in hall Bathroom

Upper Level



Living	1,818 sq. ft.
Main Level	909 sq. ft.
Upper Level	909 sq. ft.
Lower Level Unfinished	829 sq. ft.
Entry Porch	61 sq. ft.
Garage	469 sq. ft.
Total	3,177 sq. ft.